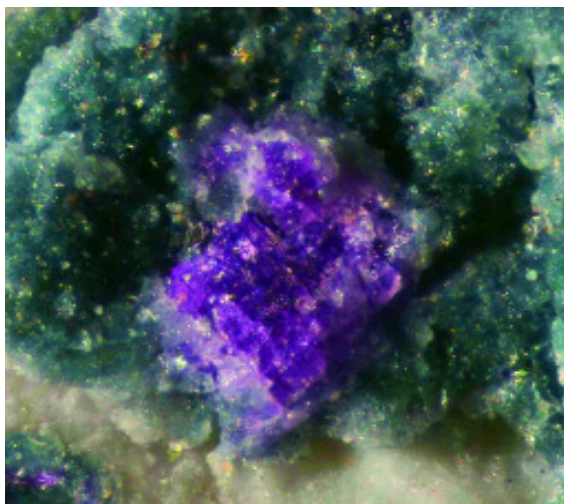


ROCK TRAILS



Newsletter of the StateLine Gem and Mineral Society

VOLUME 57
ISSUE i
JANUARY 2017

In This Issue:

- 1 **Officers and Directors**
- 2 **President's Tidings**
- 2 **Secretary's Scoop**
- 3 **Treasurer's Statement**
- 4 **The Origin of Birthstones**
- 5 **Putnisite: New Mineral
Discovered in Australia**
- 6 **Bench Tips**
- 7 **Upcoming Events**

2016 Officers and Directors

President: Sherman Kardatzke, 517 673-5487
Vice President: Glenda Gafner, 517 403-6310
Secretary: Heidi Storehalder, 419 261-6451
Treasurer: Doris Brzezicki, 269 267-1123
Past President: Edmund Jarzembki, 419 237-2000
First Year Director: Jan Hauter, 517 286-6971
Second Year Director: Carl Mulholland, 517 539-2037
Third Year Director: Frank Kramic, 517 458-7191
Show Chairman: Sherman Kardatzke, 517 673-5487
Co-Show Chair: Glenda Gafner, (517) 451-2079
Publicity: Edmund Jarzembki, 419 237-2000
Sunshine:
Education & Lapidary:
Frank Karmic 517 458-7191
Richard Brzezicki, 269 267-7666
Newsletter Editor: Sandy Gerhart, 734 347-4796
s_gerhart@yahoo.com
Website: <http://statelinegms.com/index.html>

Meetings are held the first Sunday of each month
at 2:00 PM
at 201 W. Main St., Morenci, MI 49256



President's Tidings



Where did this year go? We had a lot of fun; lots of shows, lots of field trips, and, most of all, talked with old friends and made new ones.

Our dinner at China Buffet was great. 19-20 members showed up and a lot was talked about. It was just nice to get together and enjoy each other's company. What does everyone think, should we get together again in January? I'm up for it.

Remember, this meeting is pot luck, so don't forget to bring a dish to pass

This meeting will not be on the first weekend this month, since it falls on New Year's Day. It will be on the 8th of January.

After the new year, the wire wrapping classes will start up again and I will be at the club house on Sat. again starting the 7th of Jan.

I wish all of the members a wonderful. Holiday season and see you next year! Sounds like a long time off but its not! Looking forward to what next year will bring.

Sherm

Secretary's Scoop

There is no Secretary's Report this month due to the death of Heidi Storehalder's mother. We all offer our sympathy to Heidi in this sad time.



Treasurer's Statement



Dues for 2017 are now payable. A number of members have already paid their dues. The club policy is that members will continue to receive their newsletter thru March of the year following their current active membership. You can pay your dues at the next meeting or mail a check made out to State Line Gem & Mineral Society % Doris Brzezicki, 419 N Broad St, Adrian, MI 49221. Individual membership is \$10.00 and family membership is \$15.00.

Please add this new member to your list:

Cheryl I Mattin
301 Fulton St. Box 194
Fayette OH 43521
(419) 237-2807
cmattin@roadrunner.com



THE ORIGIN OF BIRTHSTONES

BY JAMES C. CAGLE,
CALGARY LAPIDARY JOURNAL,
SEP 2013

Birthstone tradition may be traced back as far as the Bible story of Aaron, the High Priest of the Israelites and brother of Moses. Twelve stones were set in a jeweled breastplate about nine inches square. The Bible says, in Exodus, Chapter 28, Verse 21, “and the stones shall be the names of the children of Israel, twelve, according to their names, like the engravings of a signet, everyone with his name shall they be according to their tribe.”

The first row of stones on the breastplate contained a sardius (apparently the modern carnelian), a topaz, and a carbuncle. The second row consisted of an emerald, a sapphire, and a diamond; the third, a ligure, an agate, and an amethyst. The last row contained a beryl, an onyx, and jasper. It was from this breastplate, worn by the Hebraic High Priest Aaron that the custom of wearing birthstones evolved. Leaders of each of the tribes of Israel wore the stones that had been assigned to the tribe by Aaron. The stones were later associated with the signs of the zodiac and eventually, with the 12 months of the year.

Originally, it was considered good fortune to wear the proper stone for each month, but by the eighteenth century, the custom of wearing the stone of one’s birth month was already becoming popular. Many ancient myths and superstitions have accumulated around these stones.

Amethyst, for instance, the February stone of purple or wine-like colour, was associated in pagan myth with the god Bacchus, and the belief prevailed that it protected one against many of medicinal value, especially as antidotes against poison. Peridot and diamond are said to protect one against forces of evil. The warm red glow of the ruby gave rise to the belief that it contained an internal fire, which could be neither quenched nor concealed.

Even today, birthstones are often thought to possess occult powers and confer favorable influences upon the wearer.

The following is a list of birthstones and their symbolic meanings as established by the National Association of Jewelers in 1912, and approved by the Jewelry Industry Council in 1950.

January – Garnet (constancy) - grossularite form Garnet
February – Amethyst (sincerity)
March – Bloodstone & Aquamarine (courage)
April – Diamond (innocence)
May – Emerald (success in love)
June – Pearl, Moonstone & Alexandrite (health, longevity)
July – Ruby (contentment)
August – Sardonyx & Peridot (married happiness)
September – Sapphire (clear thinking)
October – Opal & Tourmaline (hope)
November – Topaz (fidelity)
December – Turquoise, Zircon & Lapis lazuli (prosperity)



Article from The Rockhounder, March 2014
Excerpts from the article by James Cagle
Information compiled from the Holy Bible,
Encyclopedia Britannica, Groliers Encyclopedia, et al.

Putnisite: New Mineral Discovered in Australia

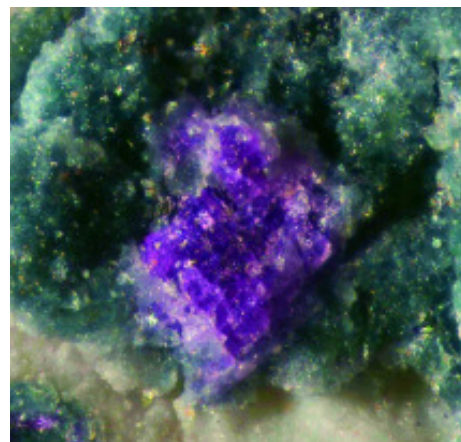
A multinational group of scientists led by Dr Peter Elliott of South Australian Museum and the University of Adelaide has described a new mineral from the Polar Bear peninsula, Southern Lake Cowan, Australia.

The new mineral is named putnisite after Drs Christine and Andrew Putnis from the University of Münster, Germany, for their outstanding contributions to mineralogy.

Putnisite occurs as isolated pseudocubic crystals, up to 0.5 mm in diameter, and is associated with quartz and a near amorphous Cr silicate.

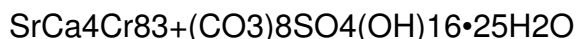
It is translucent, with a pink streak and vitreous lustre. It is brittle and shows one excellent and two good cleavages parallel to {100}, {010} and {001}.

“What defines a mineral is its chemistry and crystallography. By x-raying a single crystal of mineral you are able to determine its crystal structure and this, in conjunction with chemical analysis, tells you everything you need to know about the mineral,” explained Dr Elliott, who, along with colleagues, described putnisite in the *Mineralogical Magazine*.



“Most minerals belong to a family or small group of related minerals, or if they aren’t related to other minerals they often are to a synthetic compound – but putnisite is completely unique and unrelated to anything.”

Putnisite combines the elements strontium, calcium, chromium, sulfur, carbon, oxygen and hydrogen:



The mineral has a Mohs hardness of 1.5–2, a measured density of 2.20 g/cm³ and a calculated density of 2.23 g/cm³. It was discovered during prospecting by a mining company in Western Australia.

“Nature seems to be far cleverer at dreaming up new chemicals than any researcher in a laboratory,” Dr Elliott concluded.

P. Elliott et al. 2014. Putnisite, $\text{SrCa}_4\text{Cr}_{83+}(\text{CO}_3)_8\text{SO}_4(\text{OH})_{16}\cdot 25\text{H}_2\text{O}$, a new mineral from Western Australia: description and crystal structure. *Mineralogical Magazine*, vol. 78, no. 1, pp. 131-144; doi: 10.1180/minmag.2014.078.1.10

<http://www.sci-news.com/geology/science-putnisite-new-mineral-australia-01869.html>

Bench Tips

by Brad Smith

See all Brad's jewelry books at
[Amazon.com/author/BradfordSmith](https://www.amazon.com/author/BradfordSmith)

SANDING/POLISHING IN TIGHT PLACES



Often you'll need to sand or polish an area that's impossible to reach with even a small wheel on a flexshaft. Other times it might be the bottom of a pocket or inside bottom corner of a box that needs to be finished. One trick for these nit-picky jobs may be left over from your last Chinese dinner - a chopstick.

I've found quite a few uses for these in the shop. Prepare the tip by simply sawing it off at a 45 degree angle. Then apply whatever abrasive grit you will need for the job or hold a strip of sandpaper around the end. Loose grit can be held onto the tip with a bit of vaseline or oil. Tripoli or rouge can be just rubbed onto the end of the chopstick.

OCHRE APPLICATOR

Yellow ochre is used when you want to be sure the solder won't flow on an area of your piece while you're soldering another area. The only problem with ochre is coming up with a good way to store and apply it.

I use recycled nail polish bottles. They seal well and have a built-in brush applicator. Just clean them out with a little acetone or nail polish remover, and they're ready to go.



Upcoming Events

Sunday, January 8, 2017
State Line Gem & Mineral Society
monthly meeting & induction of officers
2:00 p.m.
201 W. Main St.
Morenci, MI 49256



HAPPY NEW YEAR

Rock Trails

Sandy Gerhart, Editor
704 W. US Hwy 223, #205
Adrian, MI 49221

Meetings are held the
first Sunday of each month
at 2:00 PM
at 201 W. Main St.,
Morenci, MI 49256

