

ROCK TRAILS



Newsletter of the StateLine Gem and Mineral Society

VOLUME 56
ISSUE XII
DECEMBER 2016

2016 Officers and Directors

President: Sherman Kardatzke, 517 673-5487
Vice President: Glenda Gafner, 517 403-6310
Secretary: Heidi Storehalder, 419 261-6451
Treasurer: Doris Brzezicki, 269 267-1123
Past President: Edmund Jarzembki, 419 237-2000
First Year Director: Jan Hauter, 517 286-6971
Second Year Director: Carl Mulholland, 517 539-2037
Third Year Director: Frank Kramic, 517 458-7191
Show Chairman: Sherman Kardatzke, 517 673-5487
Co-Show Chair: Glenda Gafner, (517) 451-2079
Publicity: Edmund Jarzembki, 419 237-2000
Sunshine:
Education & Lapidary:
Frank Karmic 517 458-7191
Richard Brzezicki, 269 267-7666
Newsletter Editor: Sandy Gerhart, 734 347-4796
s_gerhart@yahoo.com
Website: <http://statelinegms.com/index.html>

In This Issue:

- 1 Officers and Directors
- 2 President's Tidings
- 2 - 3 Secretary's Scoop
- 4 - 5 Christmas, Arizona
- 6 Bench Tips
- 7 Sale Flyer

Meetings are held the first Sunday of each month
at 2:00 PM
at 201 W. Main St., Morenci, MI 49256



President's Tidings



Wow! Where has this summer gone? And what a summer! Look at all the fun that was had, starting with the Jackson show and ending with Appleumpkin and a few rock and gem shows. After that, now comes the winter months where we can do some training for the new members and a refresher for those that might need it. Maybe a few get togethers just to have fun and not lose touch with each other. Frank and I have started some training the first of the month and Richard has been on Tuesdays. I have been working on the big slab saw and hope to have it operating soon. I have figured out how to mount the drive motor for the feed table making it an auto feed. This will be a big addition to our equipment. Would work on it this weekend, which is Thanksgiving, but I have a road trip to the UP to see my sister and, yes, maybe some rock picking.

Remember this meeting is cookie exchange. Can't wait and if anyone has show and tell, please bring them in

Hope everyone has a super Thanksgiving and see everyone at the meeting.

Sherm

Secretary's Scoop

November 6, 2016

President Sherm Kardatzki called the meeting to order, with Glenda giving the invocation. The Pledge of Allegiance followed after.

Doris made a motion to accept the Secretary's report and it was seconded by Shirley. It passed with all in favor.

Doris presented the Treasurer's report including monthly expenses like rent and Consumer's, as well as the application for Appleumpkin and new saw blades for the club. She also shared projected expenses and income for December. Phyllis made a motion to accept, which was seconded by Judy and it passed with all in favor.

Glenda informed us that she had not ordered the geodes from Madagascar yet, as she had discovered that the minimum order would be for 500 pounds and wanted to bring this before the club. After some discussion, Carl made a motion to have Glenda order them. Judy seconded this and it passed with all in favor.

Sherm and Frank had worked together on ordering saw blades for the club, but they also wanted to volunteer to teach members to operate the equipment the correct way, which would cut down on the need to replace blades. Many members were in favor of this, and it was brought up that maybe



Continued on page 3

Secretary's Scoop

Continued from page 2

members could donate a little bit to the club if they wanted to use the equipment. Some clubs charge 1 or 2 dollars an hour to use equipment and Toledo also requires members to complete a safety course first. Linda H. suggested a refresher course each year for members who are interested. After discussing options, it was decided that members who take the safety class would not be required to donate, but other members who were interested in using the equipment would be asked to donate \$2 each time. Phyllis made a motion to accept this. Linda H. seconded, and it passed with all in favor.

Members who are interested in taking the classes will be required to sign a waiver and will be listed in a logbook of members who are certified to use the equipment. Classes will be 4-5 weeks starting on the 12th from 1-4 pm. Night classes and make up days were also offered to make the schedule more flexible and allow more members time to attend. The classes will cost \$35 for non members and \$25 for members. Anyone 10 years old and above will be allowed to participate. Classes will be small, so anyone who is interested is encouraged to contact Frank or Sherm.

It was suggested that the gift shop be open to customers during the classes and a sandwich board put out on the sidewalk to inform the public during open hours. It was also suggested that the gift shop be open on December 3rd during the festivities in Morenci. It was decided that Phyllis, Jan and Shirley would watch the store on that day from 1-4 pm. Frank will donate a flashing Open sign to the club to put in the window.

The nomination of officers was also discussed and the popular opinion was to re-elect all the current officers for another year. Carl made a motion to accept this and it passed with all in favor.

Glenda asked the present members if they had any suggestions or ideas for trips for the next year. Along with our annual trip to Bedford, IN the last week of June, a trip was suggested to hunt for Kentucky agates, as well as a day trip to Flint Ridge and a trip to a mine in Kentucky for florescent Fluorite which offers both day and night digs. Glenda also had an idea to travel to the Upper Peninsula to search for Lake Superior agates in the second or third week of June.

Glenda made a motion to adjourn and was seconded by Phyllis. It passed with all in favor.

Respectfully submitted,
~Heidi Storehalder~

Editor's Note:

Catherine Choske's address has changed to:
32001 Cherry Hill Rd, Apt. 310
Westland, MI 48186.

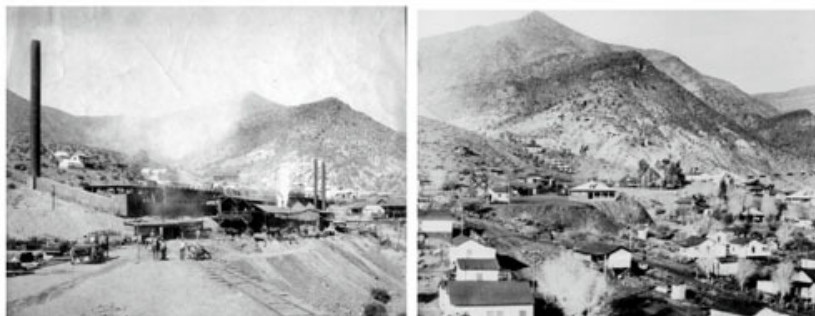
Please make changes to your member list.



Christmas, Arizona

Christmas is an uninhabited mining community in Gila County, Arizona, United States. The mine which led to creation of the town was staked on Christmas Day 1902, prompting the name. During the three decades in which the town's post office operated it was a popular destination for holiday mail seeking a "Christmas" postmark. The mine is also the location where the minerals apachite, junitoite, and ruizite were first discovered.

It has frequently been noted on lists of unusual place names.



Christmas Mine and Community - courtesy of Arizona Geological Survey

History

Christmas traces its history to a pair of mining claims in the Dripping Spring Mountains. The first, filed in 1878, was made by Bill Tweed and Dennis O'Brien while the second, filed in 1882, was made by Dr. James Douglas. The claims were invalidated in 1884 when it was determined they were located within the

boundaries of the San Carlos Apache Indian Reservation. Several years later prospector George B. Chittenden began petitioning the U.S. Congress to modify the reservation's boundaries. An executive order establishing new boundaries for the reservation, and removing the old mining claims from the reservation, was signed by President Teddy Roosevelt on December 22, 1902.

Chittenden arraigned for a series of relay riders between the telegraph office in Casa Grande and his camp site just outside the reservation. News of the boundary change arrived late on Christmas Eve prompting Chittenden and his partner, N. H. Mellor, to immediately set out for the old claim sites. The pair staked their claim during the early morning hours and later stated, "We filled our stockings and named the place Christmas in honor of the day."

The Christmas mine produced 55 million pounds (25 kilotons) of copper, with a value in excess of US\$10 million, and limited amounts of silver and gold between 1905 and 1943. Prior to the Panic of 1907, the Christmas mine was operated by the Saddle Mountain Mining Company. Two years after the panic, the mine was reopened by the Gila Copper Sulphide Company. During this time the town of Christmas sprang up near the mine. By 1919 the town boasted a meat market, general store, billiards hall, and two club houses, one for the Hispanic workers and the other for the Whites.

The mine fell into receivership in 1921 and was closed. It reopened four years later when the Miner Products Company established a concentration operation capable of processing 500 tons of copper ore per day. The town continued to grow and reached a peak population of roughly 1,000 by the early 1930s. Added amenities included a barbershop, dairy, hat shop, grocery store, school, and a church. Missing were common mining town features such as gambling halls, brothels, and saloons, the town residents tending to avoid both vice and lawlessness. A drop in copper prices however caused the

Christmas, Arizona

Continued from page 4

population to shrink to about 100 people by the end of 1931.

The town's post office opened on June 17, 1905. Over the next three decades the post office opened and closed several times based upon the fortunes of the mine. It was also difficult keeping a postmaster for the facility as the postmaster's pay was based primarily on the office's stamp sales. During holidays the post office was considerably busier. Christmas cards and other packages were sent from across the United States by people wishing to have their items re-mailed with a Christmas postmark. With the town's declining population making operations unprofitable, the Christmas post office closed for a final time on March 30, 1935. Despite the closure, holiday mail continued to arrive for the next two decades; these bags of mail were forwarded to the nearby post office in Winkelman, Arizona.

The Christmas Copper company went bankrupt in 1932 and the mine was sold to a series of different owners before being purchased by the Inspiration Consolidated Copper Company in 1955. The United States Bureau of Mines and United States Geological Survey performed exploration diamond drilling at the mine during the 1940s. In December 1956, the Inspiration Consolidated Copper Company announced plans to sink a new 1,700 feet (520 m) mine shaft. During the 1960s the mine was converted into an open pit and a number of the town's buildings were either moved or bulldozed to make way for the mine's expanded foot print. In addition to normal mining activities the site was the discovery location for several minerals, including apachite, junitoite, and ruizite. A slump in copper prices forced final closure of the mine in the early 1980s. The mine is now owned by Freeport Mcmoran and is closed to the public.



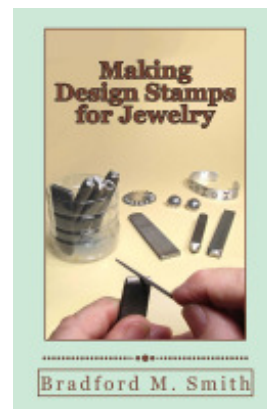
Bench Tips

by Brad Smith

See all Brad's jewelry books at
Amazon.com/author/BradfordSmith

Announcing Brad's latest jewelry techniques book for those who like Southwest-style stamped jewelry.

"Making Design Stamps For Jewelry" covers the step-by-step process of selecting best steels, carving the design, hardening the steel, and tempering the completed stamp to ensure a long service life. It describes the tools to use, gives examples for how to make several design stamps, and 78 close-up photos that illustrate the important details. Both Kindle and paperback editions are on Amazon at <http://amzn.to/2fvf58T>



LOOSE HEADS



Flying off the handle is never good, particularly if it's a hammer head. The traditional way to tighten a loose hammer head is a bit of work with wedges, but if the head is basically secure, there's a fast and easy way to tighten a loose head for about 50 cents - superglue.

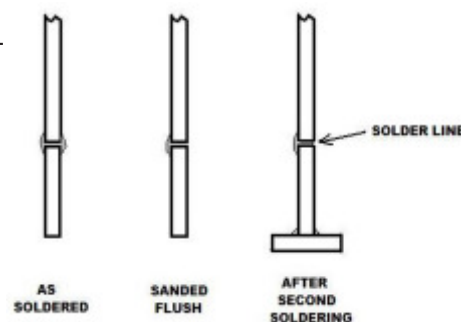
Simply put a couple drops in from the handle side, let it set up, and then a few drops from the top side. Be sure to get the thin super glue, not gel. It penetrates better. Packages of two superglues are usually available at the 99 cent store.

Note that this is only a safe practice if the hammer head is just a little loose but is basically secured onto the handle. Gluing is not a fix for a hammer head that has come off the handle or is at risk of coming off.

AVOIDING SOLDER LINES

After finishing a soldered joint on, say, a bezel, have you ever seen it reappear after you've soldered the bezel to a base plate? What's happening is that every time you heat a soldered piece to the temperature where solder flows, the liquid solder seeps a little more into the surrounding metal. This leaves a small furrow where the solder had been sanded off flush at the joint. To get rid of the furrow, you have to re-sand the joint area down to the bottom of the furrow.

To avoid this when I have another soldering operation to follow, I try to leave a little extra solder on my joints. For instance, when trimming off excess base plate from around a bezel, I leave a paper thickness of excess plate material whenever possible until I'm done with all soldering.



Of course, this isn't always possible as when a soldering operation will prevent you from gaining access to an area for final sanding and polishing. Coating the finished solder joint with ochre seems to help a bit but is not a complete solution.

State Line Gem & Mineral Society
201 W Main St., Morenci, MI

Holiday Sale



&



Open House

Saturday, Dec 03, 2016
1:00 P.M. - 4:00 P.M.

Natural Stone Jewelry, Stained Glass Items
Christmas Bracelets and Earrings



Rock Trails

Sandy Gerhart, Editor
704 W. US Hwy 223, #205
Adrian, MI 49221

Meetings are held the
first Sunday of each month
at 2:00 PM
at 201 W. Main St.,
Morenci, MI 49256

